

A5 Modular System

Rods and rod guides

Features

- Modular rod and rod guides

Material

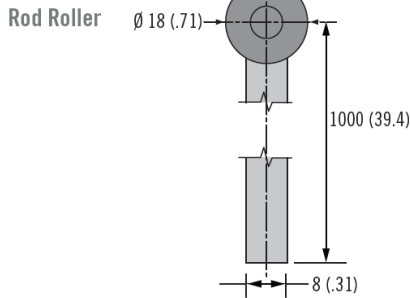
- Rods: Aluminum or steel, zinc plated
- Rod rollers: Glass-filled nylon, black
- Rod guides: Glass-filled nylon, black with steel, zinc plated hardware

Notes

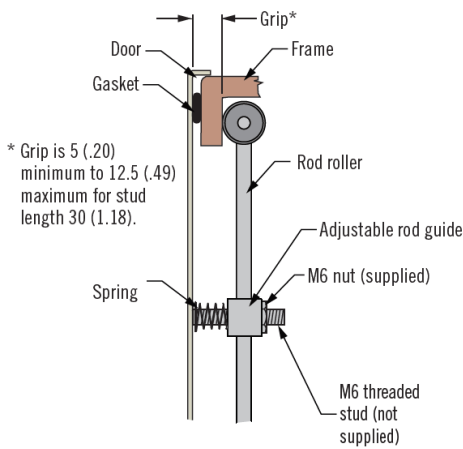
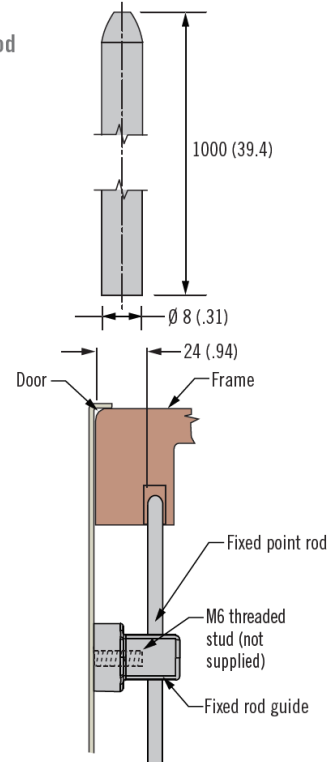
1. Choose actuator plate to match latch family or linear actuator and 2 adaptors
2. Order rod guides (2 per assembly). Fixed rod guide recommended for fixed point rod. Adjustable rod guide recommended for rod roller assembly.
3. Order rods (2 per assembly)



Rods



Fixed Point Rod

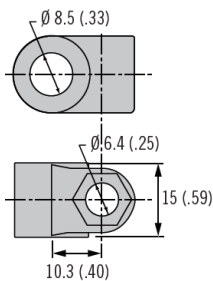


Material	Fixed Point Rod Part Number
Aluminum	A5-55-1000-10
Steel	A5-55-1000-11

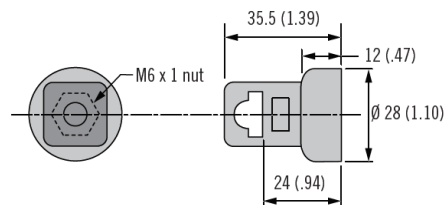
Rod Roller Steel Part Number	
A5-56-1000-21	

Rod Guides

Adjustable



Fixed



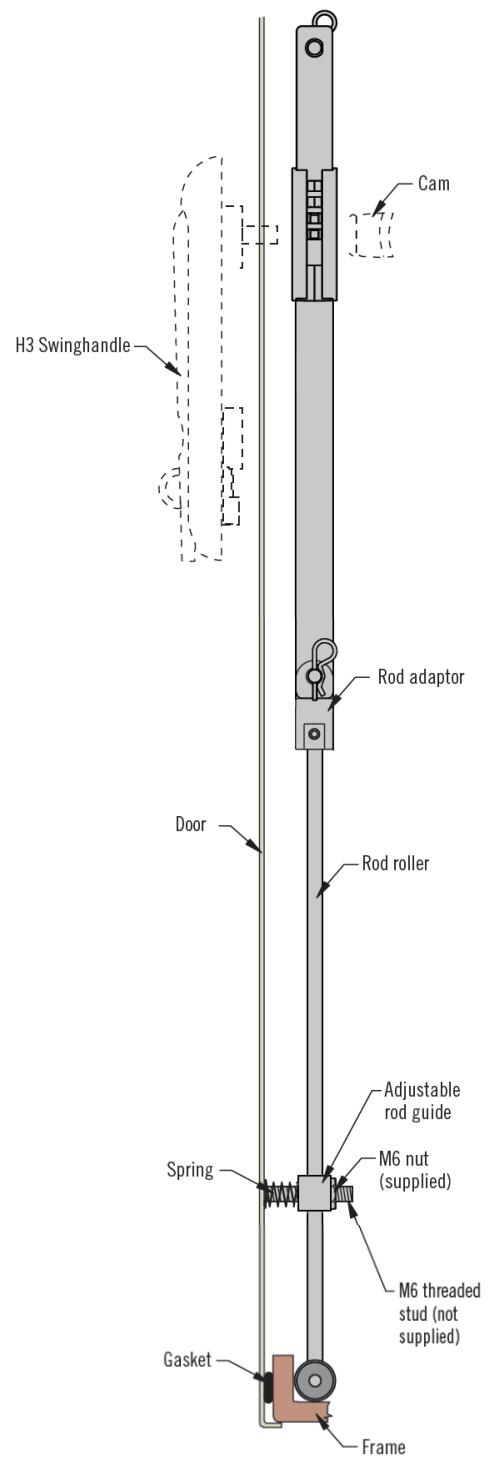
Adjustable Rod Guide Part Number (includes 2 rod guides, 2 springs and 2 M6 nuts)	
A5-87-401	

Fixed Rod Guide Part Number (one piece supplied)	
A5-81-301-71	

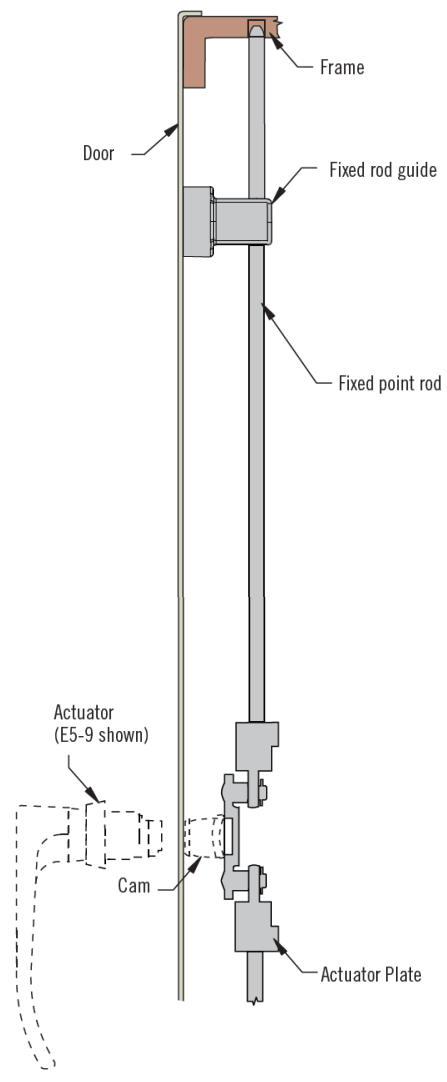
Notes

- Modular system allows for any configuration of rod and rod guides

Linear Actuator Assembly (adjustable with rod roller shown)



Actuator Plate Assembly (fixed point shown)



A5 Modular System

Actuator plates

Features

- Modular actuators to suit multiple latch families using A5 modular rods

Material

- Zinc alloy, steel, zinc plated and stainless steel set screw

Notes

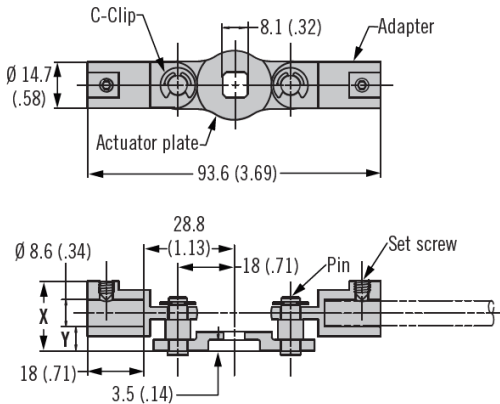
- Choose actuator plate to match latch family (one per latch required)
- Order rods and rod guides separately



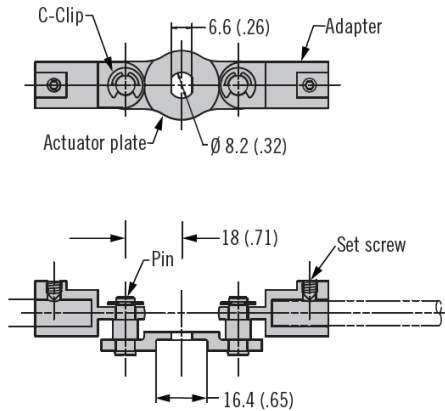
Part Number	X	Y
A5-90-101-11	22.2 (0.87)	4.7 (0.18)
A5-90-104-11	25.2 (0.99)	7.7 (0.30)
A5-90-401-11	22.6 (0.89)	5.1 (0.20)
A5-90-501-11	23.4 (0.92)	5.9 (0.23)

Actuator Plate

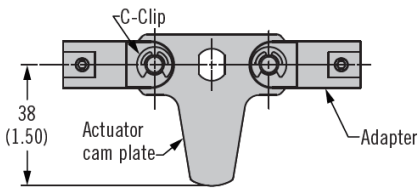
A5-90-101-11



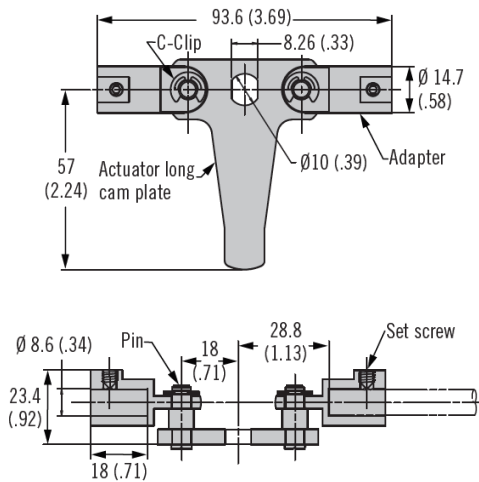
A5-90-301-11



A5-90-401-11 (Short Cam)



A5-90-501-11 (Long Cam)



Actuator Plate Part Number

Operating Latch Families	A5-90-101-11				A5-90-301-11		A5-90-401-11	A5-90-501-11
E5-5	E5-6	E5-9	H3-50	H3-60	62 Series M8 threaded shaft	92 Series M10 threaded shaft		